



DVL Insert Ledgestone Firebacks

96100276

Compatibility

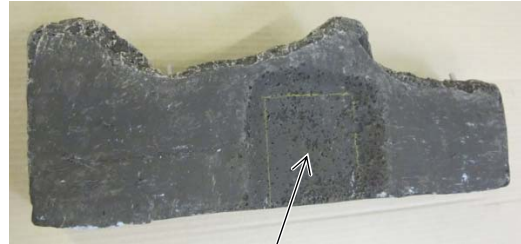
These firebacks are only compatible with DVL Inserts with Emberfyre Burners (not compatible with 33 DVI Inserts or DVL Inserts with Dancingfyre Burners)

These firebacks are only compatible with DVL inserts using Emberfyre burners built after October, 2015. These burner kits include a rear log with a cavity in the back (see pictures below). This cavity allows for the new accent light bracket (see illustration below). **To use this kit on a DVL Insert you must have the new rear log and new bracket.**

Old Rear Log

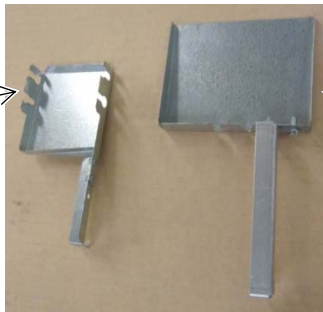


New Rear Log (250-03525)



Note this cavity in the center

Old Bracket



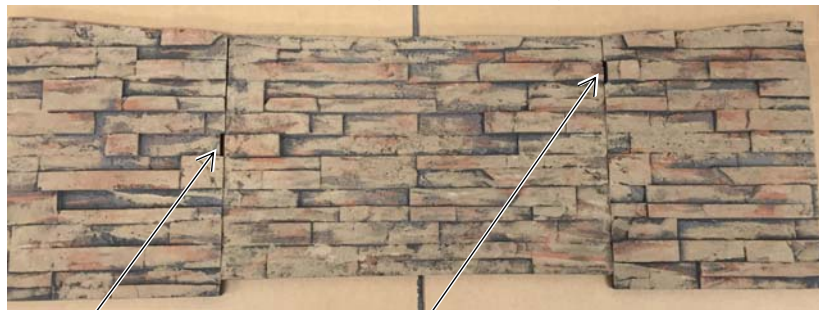
New Bracket (250-03747)

Packing List

- Rear Fireback
- Right and Left Side Firebacks

Fireback Orientation

Make sure the firebacks are oriented as shown below (the stone lines and coloring will line up). Arrange the firebacks before installing to verify alignment.



Note how these notches fit with the adjoining fireback.



DVL Insert Ledgestone Firebacks

96100276

Installation

WARNING Turn off gas to the appliance and make sure it has fully cooled prior to conducting service.

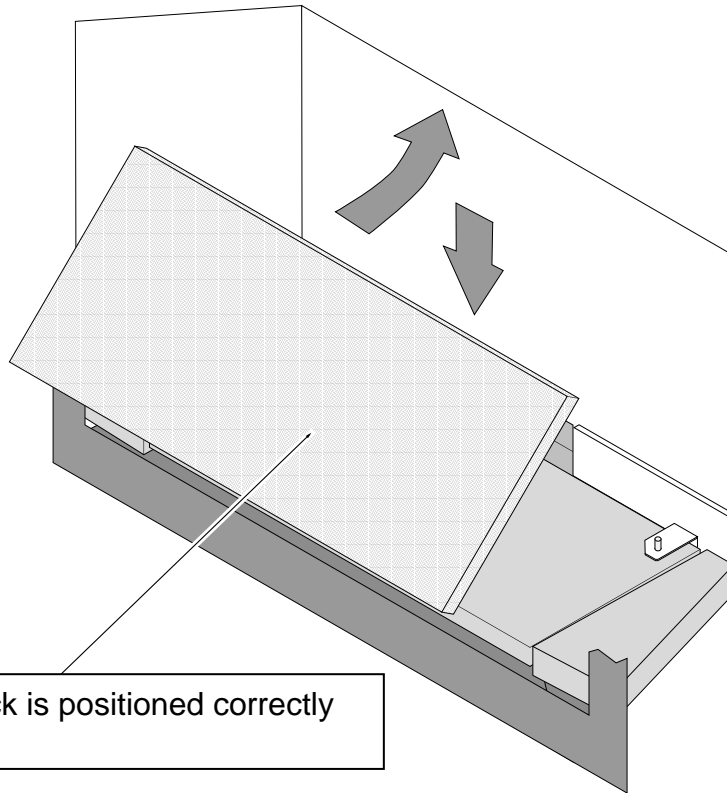
- 1 Remove the glass frame and logs (see the manual for details).

DVL Inserts with Emberfyre Burner

When using the DVL insert with Emberfyre burner, the accent light will need to be moved aside when installing the rear fireback. Remove the burner and bend the accent light bracket down. After the firebacks are in place, bend the light bracket upright and replace the burner.

- 2 Install the rear fireback as shown below. The top slides behind the baffle and the bottom rests on the shelf at the back of the firebox.

Slide the back fireback behind the baffle on top of the firebox then pivot it into place. It rests on the shelf at the back of the firebox.



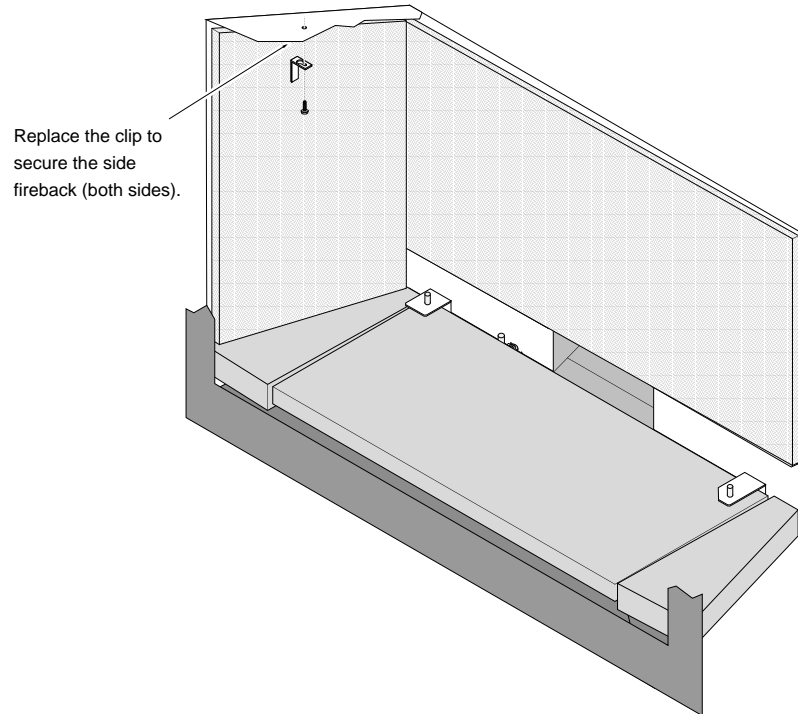
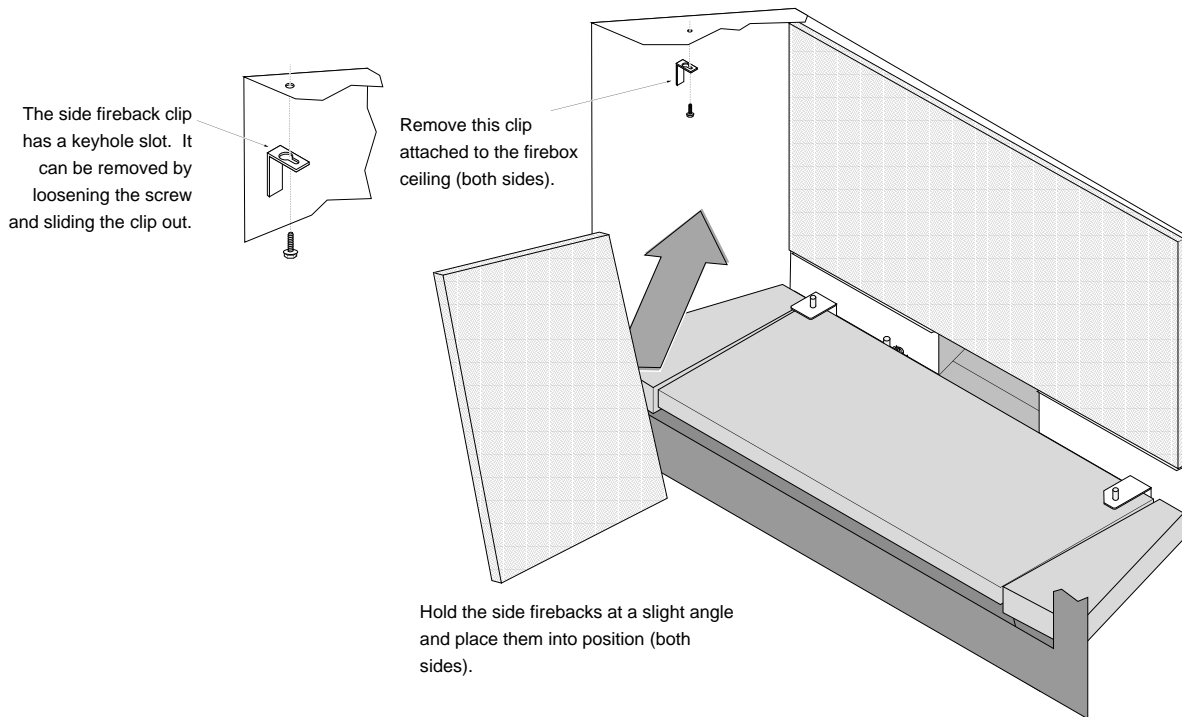
Make sure the fireback is positioned correctly (see page 1).



DVL Insert Ledgestone Firebacks

96100276

3 Install the side firebacks following the directions below.



4 Restore the appliance to the correct configuration.