

# 616 / 430 GSR 1-Piece Surround Panel

## Installation Instructions (See SKU's Below)

### Packing List

- 1-Piece Surround Panel

### 616 Dimensions and SKU's

SKU	Height	Width
96100349	30.5"	42"
96100350	34"	44"

### 430 Dimensions and SKU's

SKU	Height	Width
96100337	25"	38"
96100338	28.5"	40"

### Installation



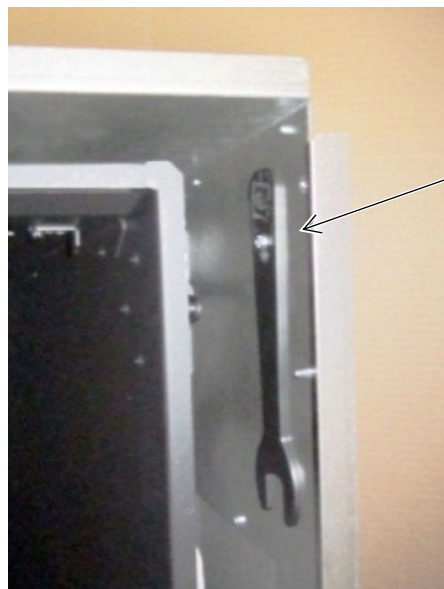
**Certain vent configurations require diffuser modification, which must be done before installing the vent or positioning the insert inside the fireplace. See the Manual for details.**



**INSTALL THE LIGHT SHIELD BEFORE INSTALLING THE SURROUND PANEL (ALL FACES EXCEPT SHADOWBOX).** The light shield (shipped with the face) prevents light from exiting the upper grill area. Install this before installing the surround panel.

**NOTE:** The surround panel is installed with the insert in position with the flue and gas line attached. See manual for order of installation.

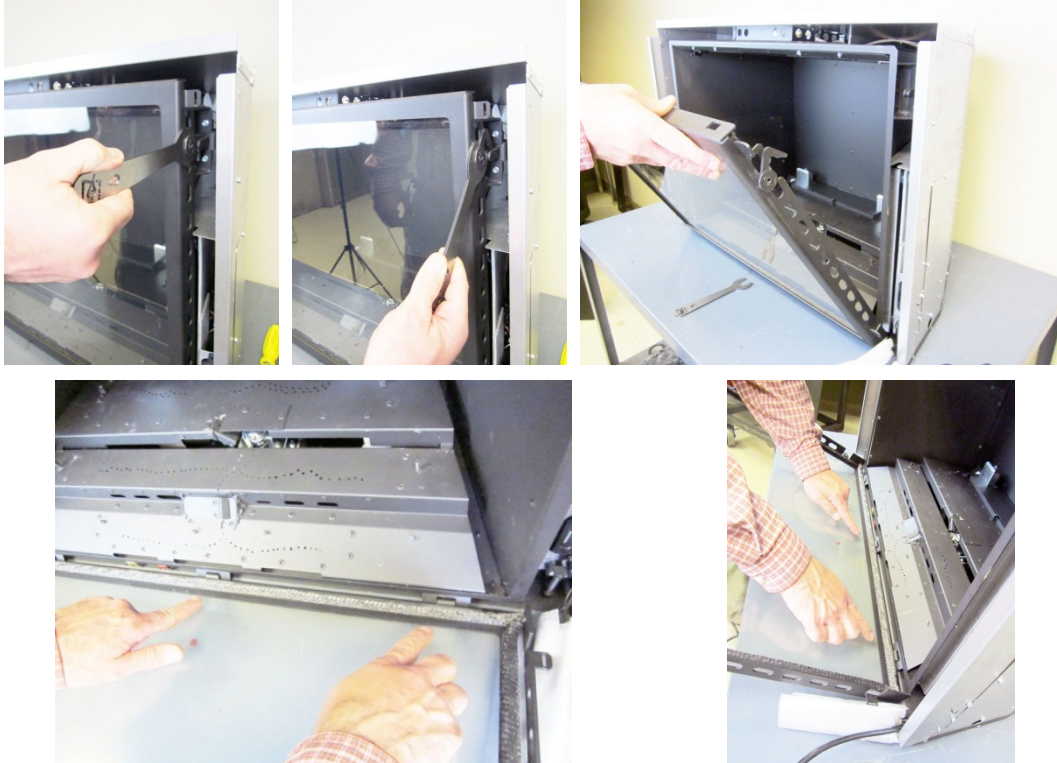
- 1 Remove the glass removal tool from the right side of the insert using a nutdriver.



The glass latch tool is shipped in this location. Loosen this screw to remove the tool. When done with the tool, hang it in the same location

# 616 / 430 GSR 1-Piece Surround Panel Installation Instructions (See SKU's Below)

- 2 Remove the glass frame as shown below. The glass frame is held in place with three tabs inserted into three slots at the bottom of the insert.



- 3 Remove and discard the shipping brackets and 2 screws from both sides of the insert.

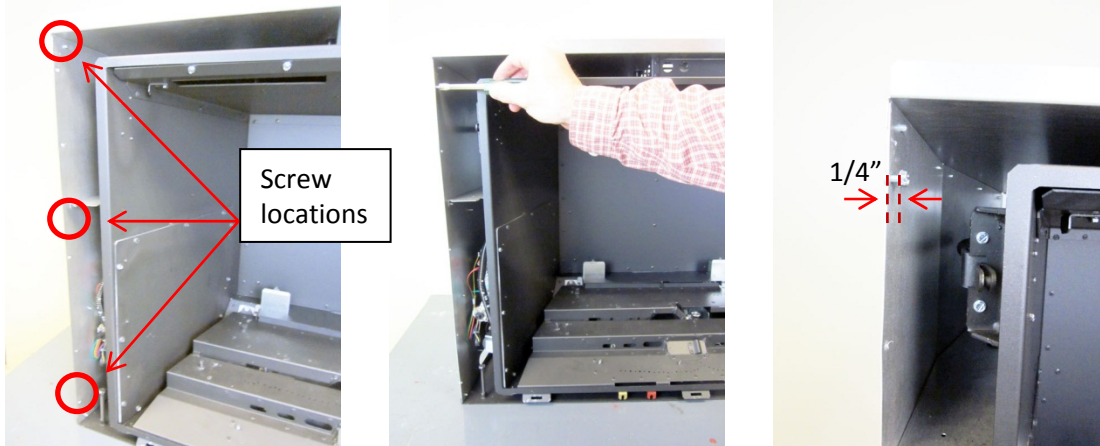


**NOTE FOR GS1 UNITS ONLY**

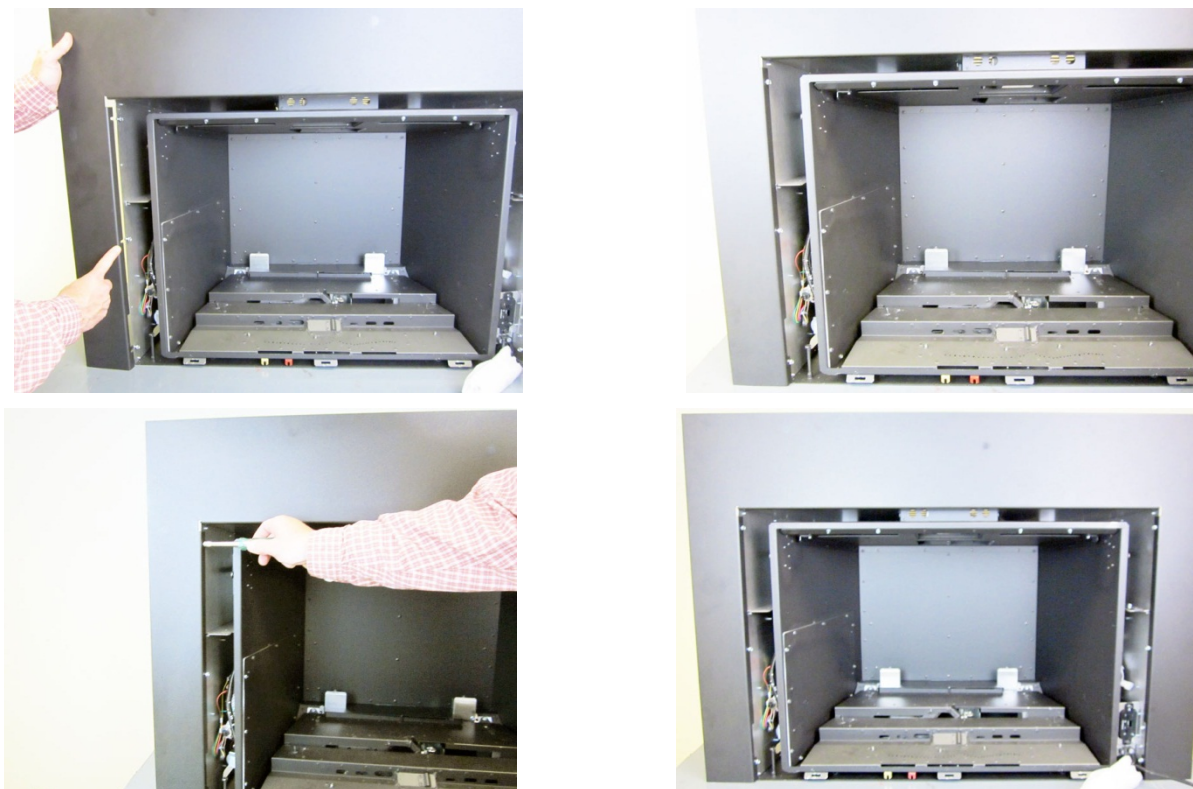
The rheostat assembly is shipped inside micro-foam, tucked next to the glass frame. Place it on the hearth.

# 616 / 430 GSR 1-Piece Surround Panel Installation Instructions (See SKU's Below)

- 4 Install six screws (included with the insert) to the sides of the inserts, 3 on each side, as shown below. Leave a  $\frac{1}{4}$ " gap between the screw head and the insert, the surround panel will hang on these screws.



- 5 Slide the surround panel into position as shown below. The notches on the sides of the surround panel fit over the 6 screws installed previously. Tighten the screws to secure the panel.





# 616 / 430 GSR 1-Piece Surround Panel Installation Instructions (See SKU's Below)

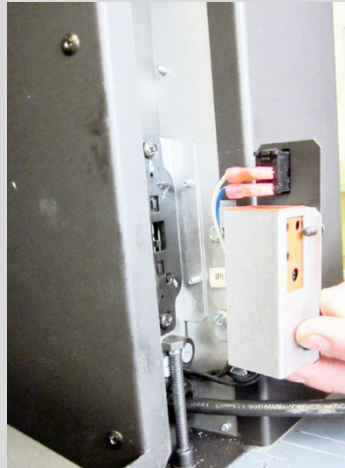
## **NOTE FOR GS1 UNITS ONLY**

The rheostat assembly is shipped inside micro-foam, tucked next to the glass frame. Place it on the hearth.

Attach the rheostat assembly to the insert as shown below.



Install 2 screws (included with the insert) into these 2 penn studs.  
Leave a 1/4" gap.



Slide the rheostat assembly into place.



Tighten the screws to secure.