

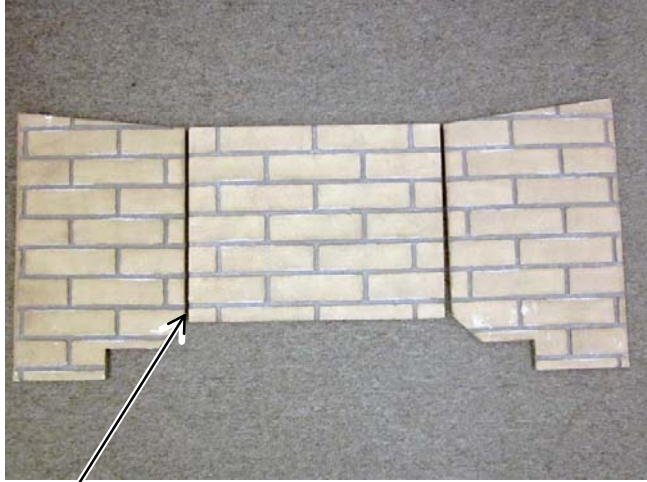
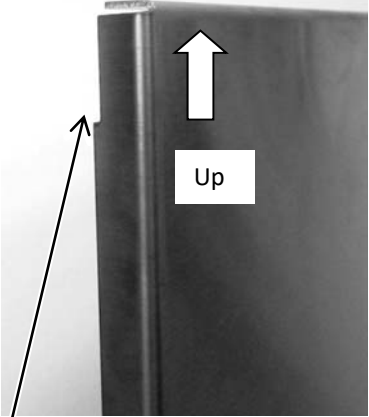
616/430 Fireback Installation Instructions

Compatibility

- **616 GSR**, SKU's: 96100924, 926, 927, 928, 929
- **430 GSR2**, SKU's: 96100917, 918, 919, 920, 921

Packing List

- Rear, Left and Right Firebacks

 <p>A photograph showing a rectangular ceramic fireback with a brick pattern. An arrow points to the bottom edge, indicating the orientation for installation.</p>	 <p>A photograph of a black metal fireback. An arrow points to the top edge, and a white box with the word 'Up' and an upward-pointing arrow indicates the correct orientation.</p>
<p><u>Fireback Orientation – Ceramic Firebacks</u> The rear fireback is rectangular and must be placed right-side-up. Lay the firebacks on a flat surface prior to installing to verify the grout lines are aligned.</p>	<p><u>Metal Fireback Orientation</u> Make sure the notch is upwards when installing.</p>

GLASS FIREBACK WARNINGS

HANDLING THE FIREBACKS: The glass firebacks are fragile – especially the edges. Take care to prevent contacting/scraping the glass against metal or rough surfaces. You may wish to lay out a blanket during installation in case you need to set the firebacks down.

We recommend the use of gloves and safety glasses during the installation of the glass firebacks.

CLEANING

These firebacks require periodic cleaning. Do not use ammonia-based cleaners (this may cloud the glass). We recommend ammonia-free glass cleaner (i.e. vinegar and water) to clean the fireback.

CURING BLACK PAINTED FIREBACKS

The black painted firebacks will fully cure under heat. Run the appliance on low for several hours to cure the paint. The firebacks may be touched-up using Forrester "Metallic Black" paint.

616/430 Fireback Installation Instructions

Installation

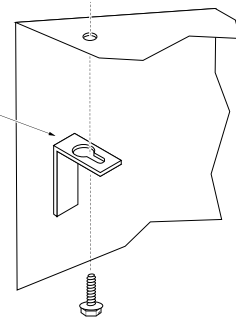


The firebacks are installed with the burners removed.
See the owner's manual for full details on order of installation.

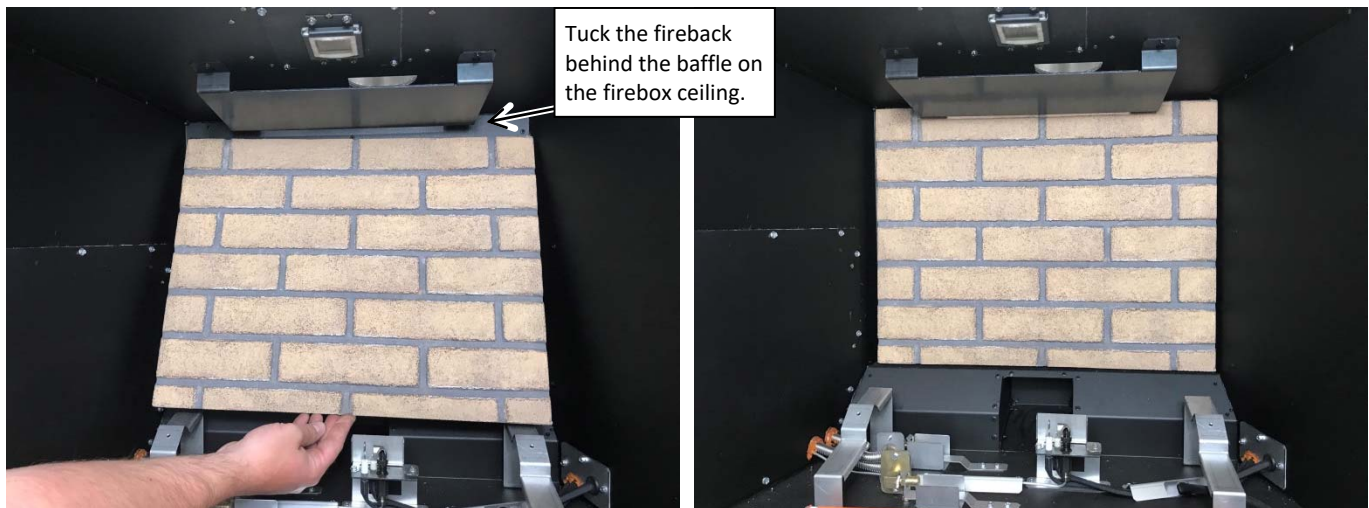
1. Remove the burner and media tray (see Owner's Manual).
2. Remove the two side fireback clips from the firebox ceiling. They are located at the outward edges of the firebox near the glass opening.



The side fireback clip has a keyhole slot. It can be removed by loosening the screw and sliding the clip out.



3. Place the rear fireback inside the firebox as shown below.





616/430 Fireback Installation Instructions

4. While holding the rear fireback, install the left fireback into the firebox as shown below.



5. Replace the left fireback clip to secure the right fireback in place



6. Install the right fireback and secure using the fireback clip. The firebox should now look like the photo below.





616/430 Fireback Installation Instructions

7. Replace the media tray.

NOTE: The tray may not fit unless the firebacks are all the way against the fireback walls.



8. Replace the burner. Secure it with the 2 screws removed earlier.

NOTE: The burner may not fit unless the firebacks are all the way against the fireback walls.

